

FILE DELIVERY SPECIFICATIONS

We adhere to the certified PDF standard for print-ready digital data when processing digital files. This standard corresponds to the international guidelines of the 'Ghent PDF Workgroup' that are used in many countries. The profiles we use to certify the PDF comply with the international ISO standard PDF/X-4. This makes them interchangeable with countries such as Germany and the USA.

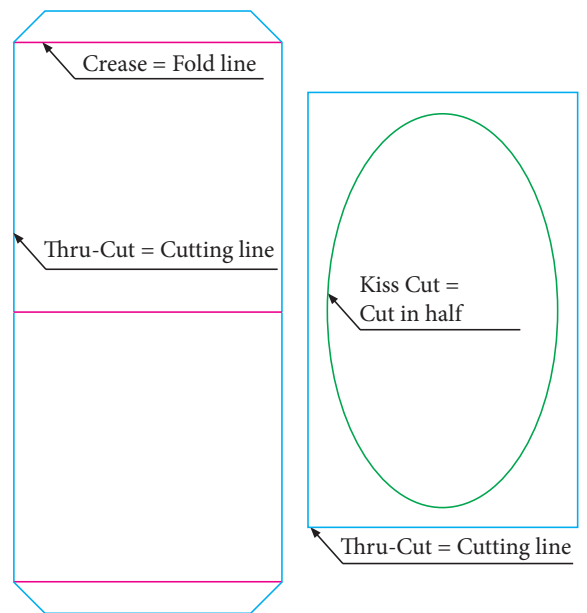
We prefer to work with PDF/X-4 files with compatibility: **Acrobat 8/9 (PDF 1.7)**.
A different version of the PDF file may misrepresent transparency and die-cut lines.

Acrobat Reader

Check the correctness of the overprint settings, the opaque layer and/or varnish layer, before submitting the PDF. Make sure that the setting in Acrobat Reader is well set by checking the overprint.
Check your settings: Preferences → Page View → Use Overprint Previews: **Always**

Layout and images

- The image resolution must be 300 dpi.
- Logos set in a illustrator eps; vector format.
- When bitmap is used, the resolution must be in a minimum of 1200 dpi.
- Define the PMS colours, the opaque white and the varnish items in a spot color.
- Placing the opaque white items in a layer on top of the image, set in overprint.
- Set the opaque white shape in a striking PMS-color.
- When using the white color in text and/or lines, use the standard swatch 'paper' and not the 'black' swatch in 0%.
- Place the die-lines (0.5 pt) in the top layer and set in overpressure.
- For the cutting dies use the names **thru-cut, crease or kiss-cut**
- All descending page elements must be provided with at least 3 mm bleed.
- Include the pages with crop marks.



Fonts

All used fonts must be included in the PDF files. You must provide all the used fonts in the documents when sending a 'open' file.

Open documents

We work with the following graphic design artwork software; Adobe InDesign, Adobe Photoshop and Adobe Illustrator for processing of 'open' files. Please note that when you submit one these open files you'll include all linked images, illustrations and fonts. You can use the 'create package' function to collect all used elements. This will create one folder containing all the necessary files.

Delivering files

Files up to 100 MB can be send via email to your contactperson at CREA Print group. Files 100 MB and over must be send via WeTransfer.